



ENERGY EFFICIENCY AND CONSERVATION ACT (EECA) 2024

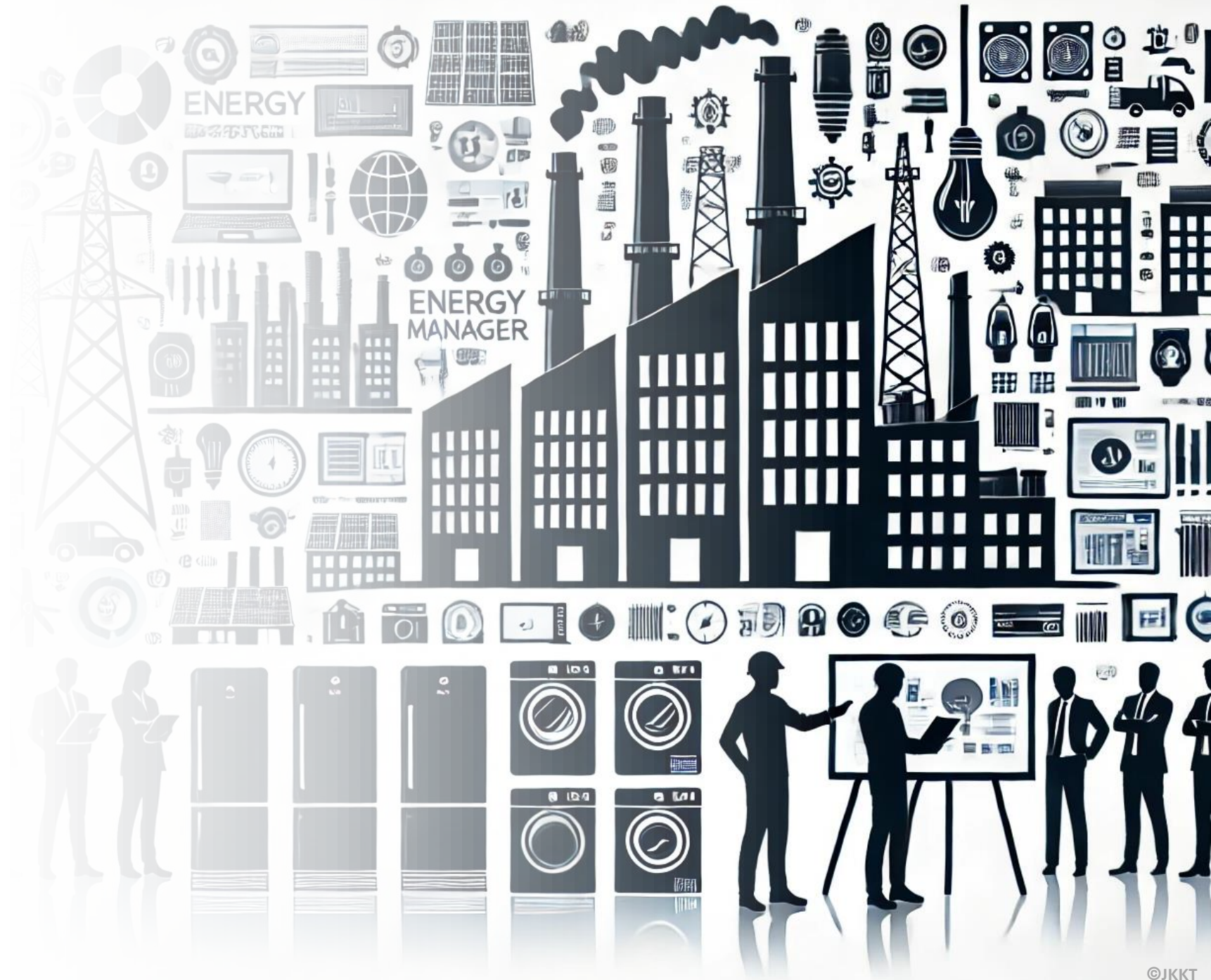
Energy Efficiency & Conservation Department
Energy Commission



KEMENTERIAN PERALIHAN TENAGA
DAN TRANSFORMASI AIR



EECA OVERVIEW



OBJECTIVES OF EECA DEVELOPMENT

LEGISLATION 1

The need to have **comprehensive legislation** to drive energy efficiency. (Results from 2017 Prelim-DSM Study by EPU).



EE INITIATIVES 2

To **improve energy efficiency initiatives** in industry, commercial and residential sector.



REDUCE CARBON EMISSION 3

To **reduce 45% of carbon emission** pledged in COP21 (Paris Agreement) by 2030 based on 2005 level.



CARBON NEUTRALITY 4

To support the government's aspiration to achieve **carbon neutrality by 2050**.

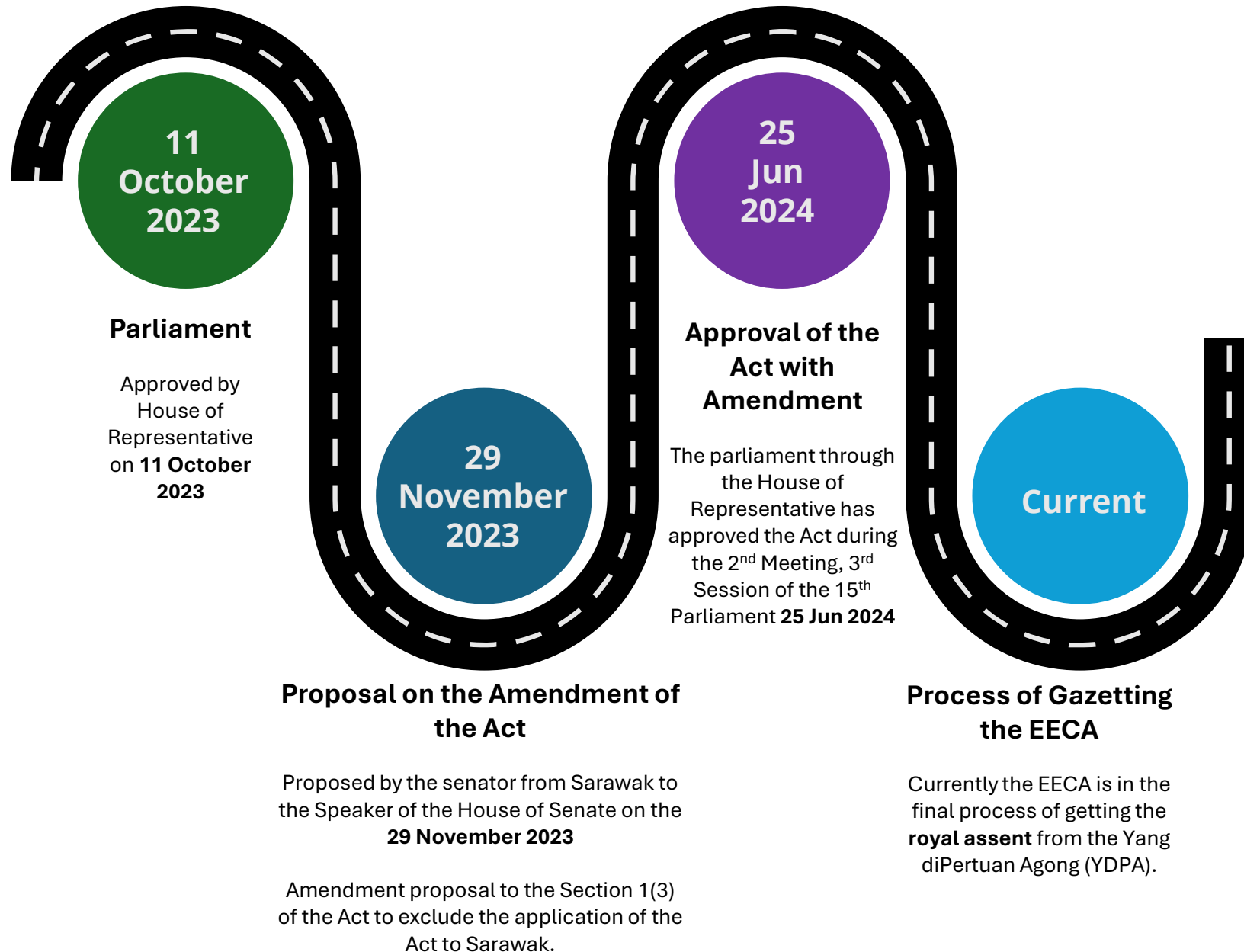


ENERGY OPTIMIZATION 5

To effectively **manage energy demand**, promoting **efficient and sustainable energy consumption** practices.



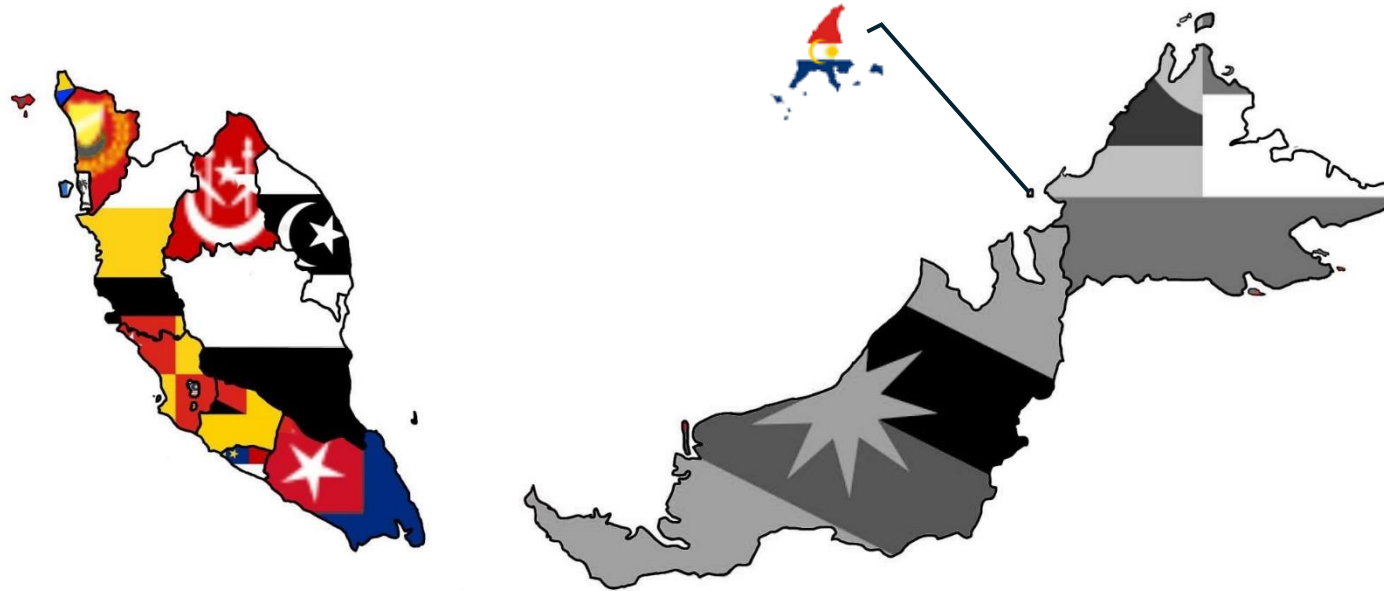
CURRENT STATUS OF EECA



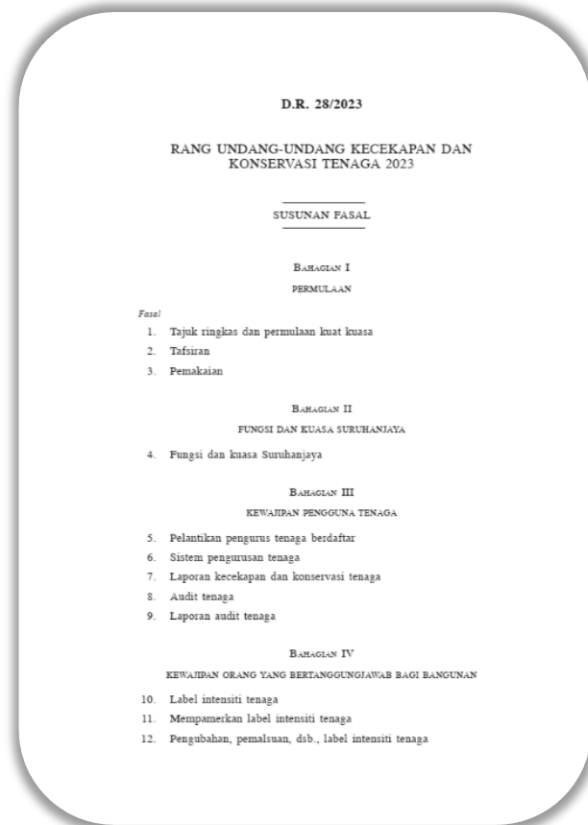
APPLICATION OF THE EECA



EECA shall apply to **Peninsular Malaysia** and **Federal Territory of Labuan**



FULL ACT

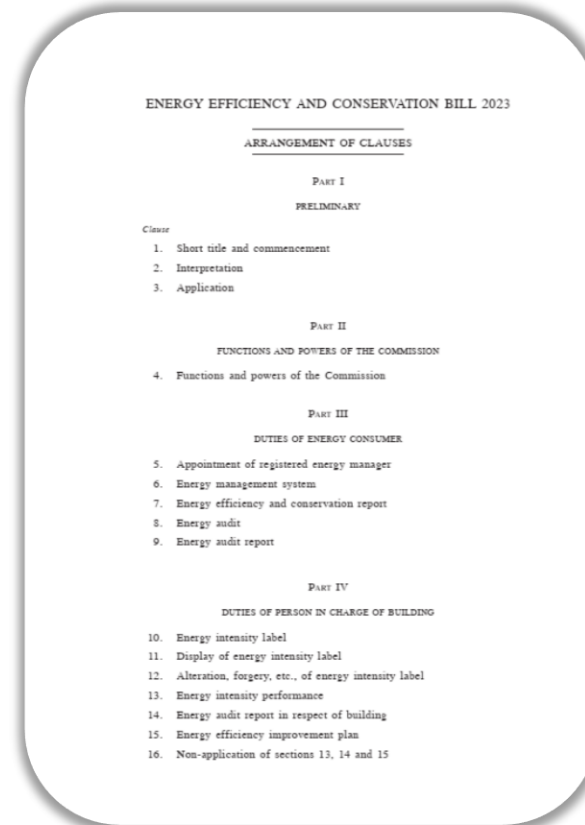


Bahasa Malaysia Version



SCAN ME

https://bit.ly/eeca24_my



English Version



SCAN ME

https://bit.ly/eeca24_eng

EECA STRUCTURE



APPLICATION

01

ENERGY CONSUMER

Subjected to energy consumer that meets the minimum prescribed threshold of **21,600GJ annually**.
(Equivalent to about RM 1.0 Million for Natural Gas & RM 2.4 Million for Electricity)



02

BUILDING

Subjected to **buildings as specified in Third Schedule** of the Act which states the type of building subjected under this Act and **meet criteria set out in the Guideline**. Currently, Schedule 3 states Office Building will be subjected to the Act.



03

ENERGY USING PRODUCTS

Requirement to obtain **Certificate of Registration (COR)**, **Certificate of Efficiency (COE)** and to be affixed with an energy efficiency rating label



04

REGISTRATION OF ENERGY MANAGER, ENERGY AUDITOR & TRAINING INSTITUTION

Application for registration of:

1. **Energy Manager (Type 1 & Type 2)**
2. **Energy Auditor**
3. **Training Institution**



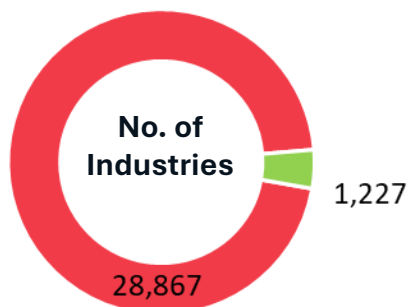
ENERGY CONSUMER



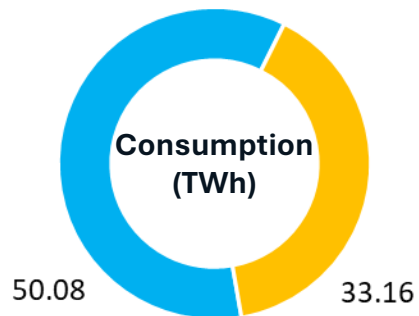
Application of EECA to Energy Consumer

21,600GJ over twelve consecutive months is the energy consumption threshold

INDUSTRIES



4.3% Industries effected under EECA from total 28,687 Industry Consumer are under Tariff E1,E2 & E3.

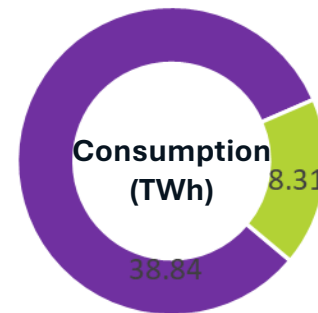


66% of industries consumption covered under EECA

COMMERCIAL



0.04% Commercial effected under EECA from total of 1.5million Commercial consumer.

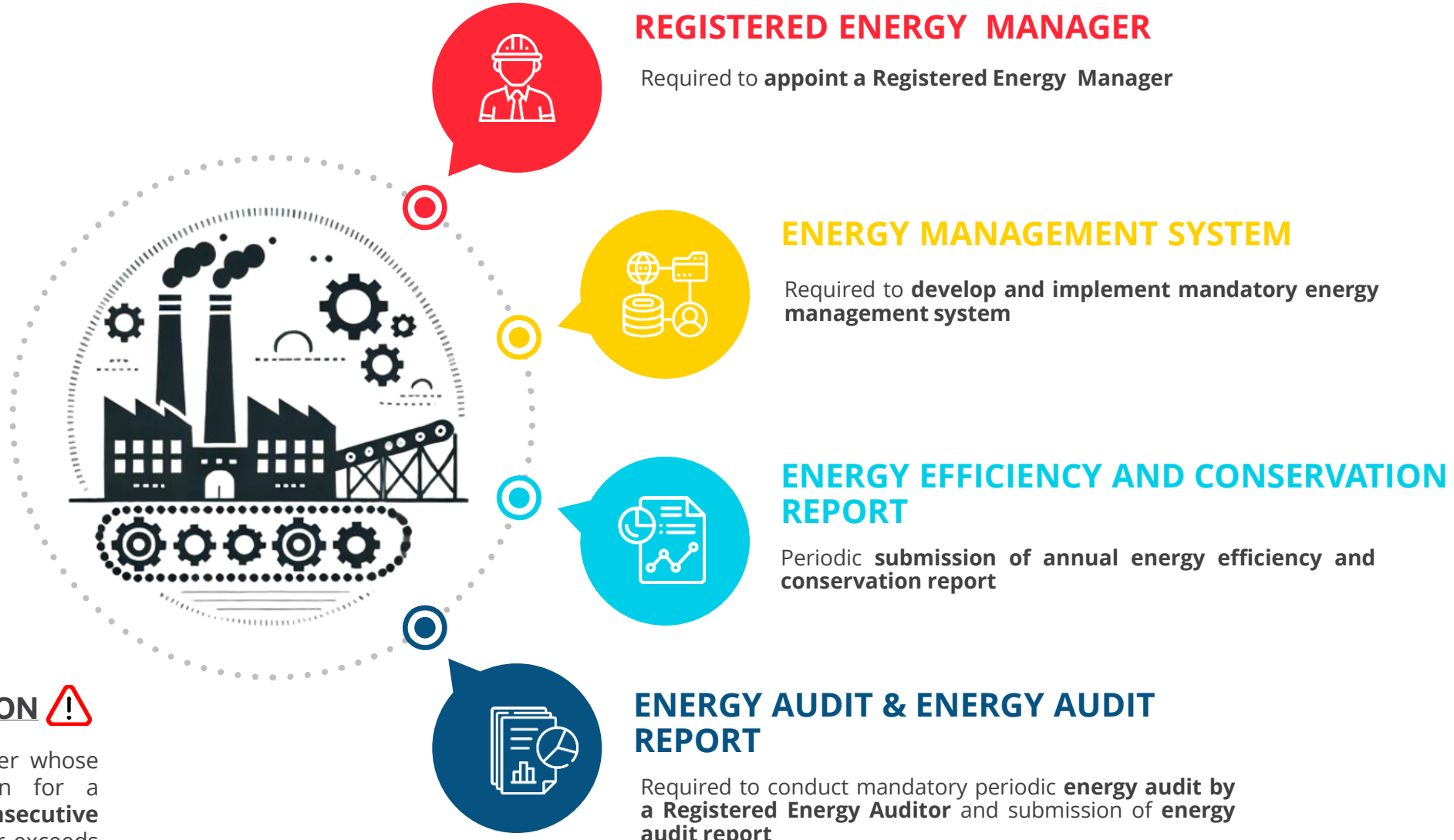


21% of Commercial consumption covered under EECA

All Industry & Commercial installations to be regulated under EECA are currently regulated under EMEER 2008

ENERGY CONSUMER

Obligation



⚠ APPLICATION ⚠

Any energy consumer whose energy consumption for a period of **twelve consecutive months** equals to or exceeds **21,600 gigajoule**.



KEMENTERIAN PERALIHAN TENAGA
DAN TRANSFORMASI AIR

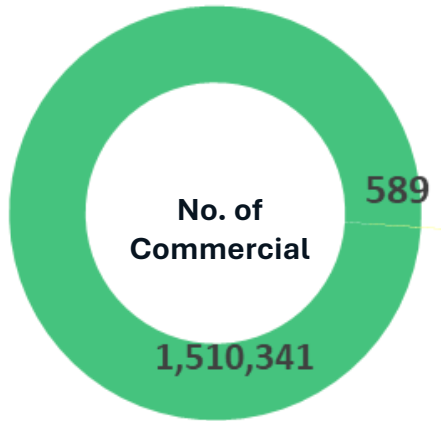
Suruhanjaya Tenaga
Energy Commission

BUILDING

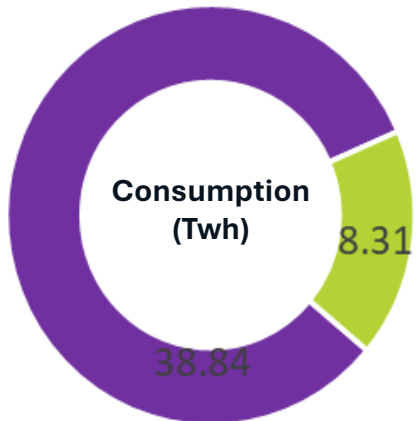


Application of EECA for Building

Any building as described in 3rd Schedule and details will be specified in the Guideline. For a start only office building with a criteria of Gross Floor Area of 8,000 m² and above will be enforced under the act

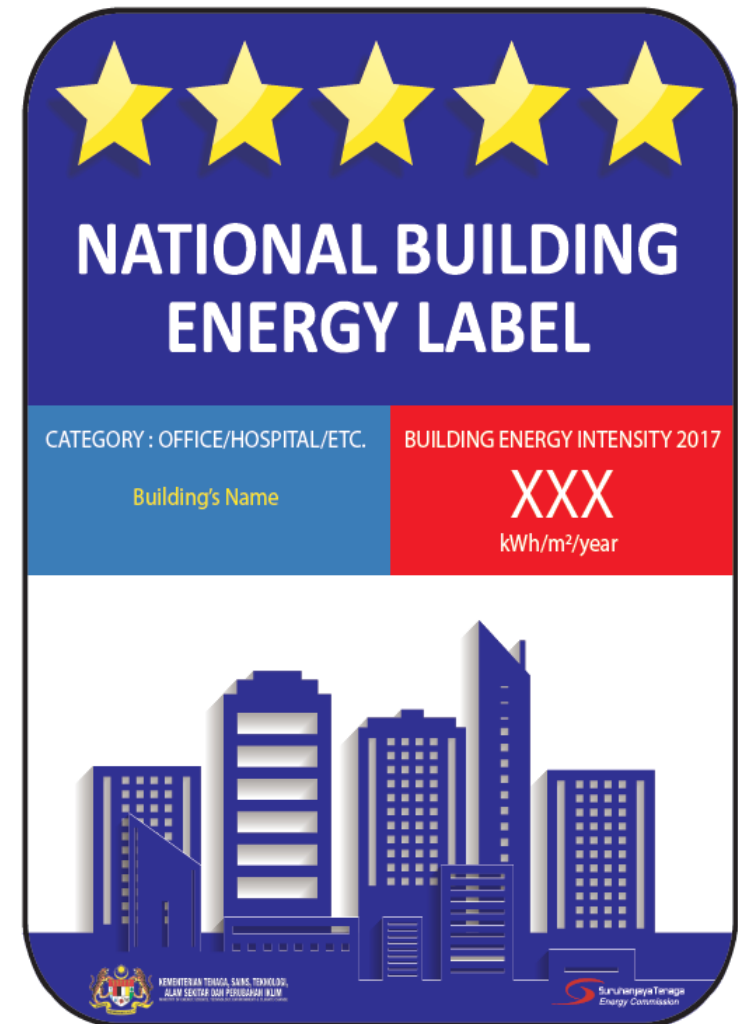


0.04% Commercial effected under EECA from total of 1.5million Commercial consumer.



21% of Commercial consumption covered under EECA are from effected Commercial covered under EECA.

79% of remaining commercial consumption can be covered via building efficiency requirements such as Building Energy Intensity Labelling (BEI Label).



BUILDING

Obligation

ENERGY INTENSITY LABEL

Requirement to **label the building** with an **Energy Intensity Label** and the person in charge of the building is required to apply for a new label annually.

Energy Intensity Label will define the building's energy intensity performance and its star rating.



MINIMUM ENERGY INTENSITY PERFORMANCE

Required to **comply with the minimum energy intensity performance** within the period prescribed in the regulations.

Any **non-compliance** with the **minimum energy intensity performance**, the person in charge of the building is required to **appoint registered energy auditor** to conduct the **energy audit** and **submit energy audit report** together with the **improvement plan**.

! APPLICATION !

Buildings as **specified** in **Third Schedule** of the Act and meet **criteria** set out in the **Guideline**.

| Act | Third Schedule | Office Building |
|-----------|----------------|--------------------------------|
| Guideline | Criteria | GFA \geq 8000 m ² |

*GFA: Gross Floor Area

BUILDING ENERGY INTENSITY RANGE



Current Implementation of Building Energy Intensity Star Rating Table for Government Offices

ENERGY USING PRODUCTS



ENERGY USING PRODUCTS

Obligation



CERTIFICATE OF REGISTRATION

Requirement for **Manufacturers and Importers** to obtain **Certificate of Registration (COR)**



CERTIFICATE OF EFFICIENCY

Requirement for **energy using product** to meet the prescribed **minimum requirement** and obtain a **Certificate of Efficiency (COE)**



ENERGY EFFICIENCY RATING LABEL

Requirement for **energy using product** in the domestic, commercial and industrial sector to be **affixed** with an **energy efficiency rating label**.



Energy using product as specified in the guideline

| | |
|-----------------|----------------------|
| Air Conditioner | Washing Machine |
| Refrigerator | Microwave Oven |
| Domestic Fan | Electric Rice Cooker |
| Lamps | Freezer |
| Television | Electric Oven |

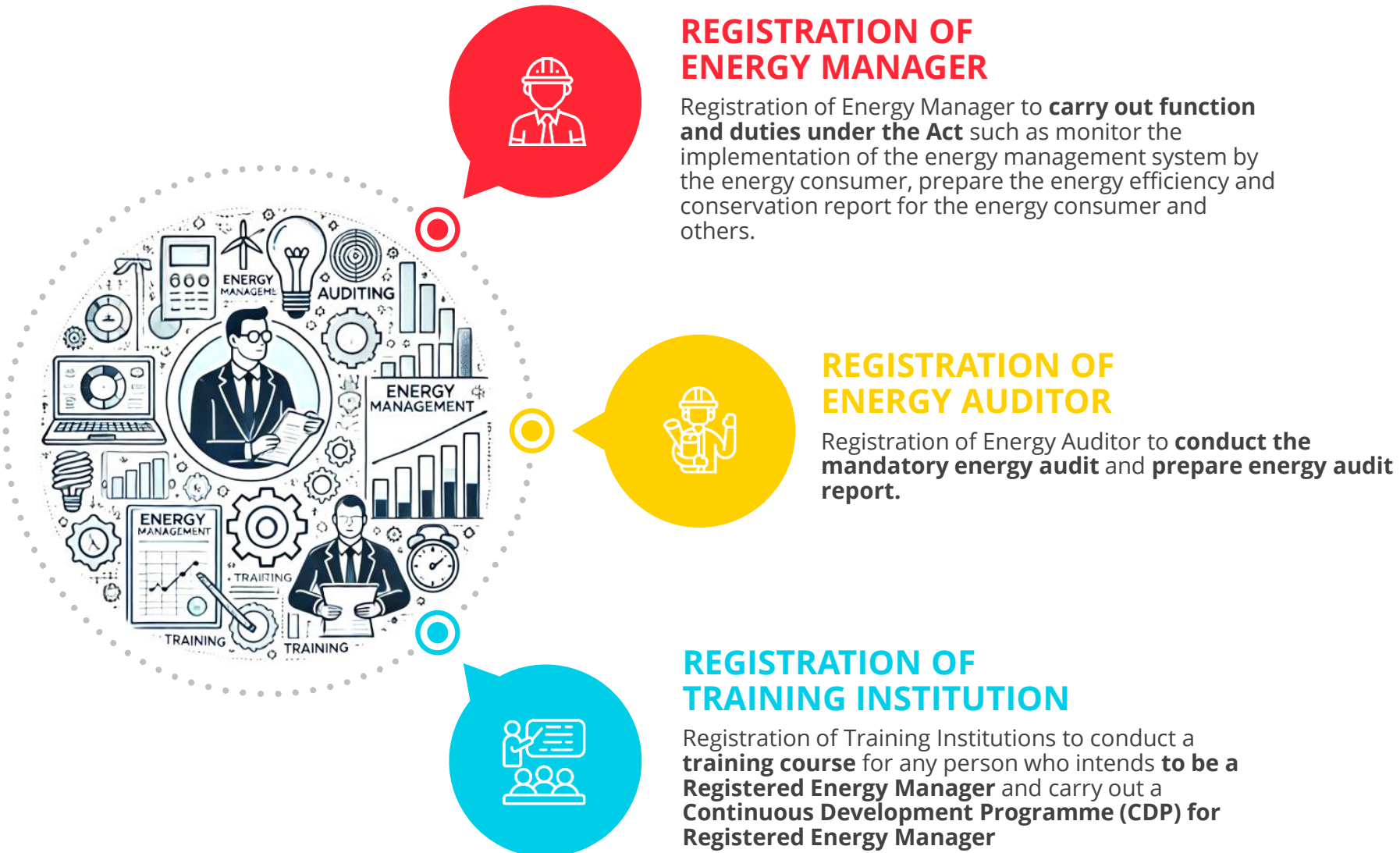
Any energy using product as specified in the guidelines.



REGISTRATION OF ENERGY MANAGER, ENERGY AUDITOR & TRAINING INSTITUTION



REGISTRATION OF ENERGY MANAGER, ENERGY AUDITOR & TRAINING INSTITUTION



ENERGY EFFICIENCY & CONSERVATION REGULATIONS

ENERGY EFFICIENCY & CONSERVATION REGULATIONS



Details on appointment of REM Type 1 and Type 2

Limitation on Appointment of Registered Energy Manager

Details on step to be taken if position of REM vacated

Details on implementation of energy management system

Details on submission of energy efficiency and conservation report

Details on submission of energy audit report

Details on application of building energy intensity label and building energy rating

Qualification of Registered Energy Manager Type 1 and Type 2

Qualification of Registered Energy Auditor

Details on compoundable offences

Details on fee

EECA GUIDELINES



EECA GUIDELINES

Guideline on Energy Management System

This guideline explains on requirement and details of Energy Management System that need to be implemented by Energy Consumer.

Guideline on Energy Efficiency & Conservation Report

This guideline states the format and information that must included in EEC Report that need to be submitted in the by Energy Consumer

Guideline on Energy Audit Report

This guideline states the format and information that must included in Energy Audit Report that need to be submitted in the by industries and buildings.

Guide on Registration for Energy manager, Energy Auditor and Training institutions

This 3 guide will state the procedure on REM, REA and training applications and renewal application.



Guideline on Ascertaining Building and Energy Intensity Performance of The Building

This guideline will state the criteria for building that will be subjected under the Act, building labelling requirements and calculation methodology of building energy intensity.

Guideline On Energy Using Product

This guideline will state the list of energy using product subjected under this Act, application and renewal of certificate of efficiency procedure, calculation methodology of energy efficiency, energy efficiency labelling requirements and testing methodologies of energy-using products

Guideline On Ascertaining Energy Consumer

This guidelines state the methodology and requirement in determination of energy consumer.

Guideline On Function and Duties of Registered Energy Manager

This guidelines state the function and duties that must be carried out by REM.





THANK YOU

Energy Efficiency and Conservation Department
Suruhanjaya Tenaga (Energy Commission)
No. 12, Jalan Tun Hussein, Precinct 2
62100, Putrajaya
Malaysia

Website address : www.st.gov.my

Telephone : (603) 8870 8500
Email: eec@st.gov.my

